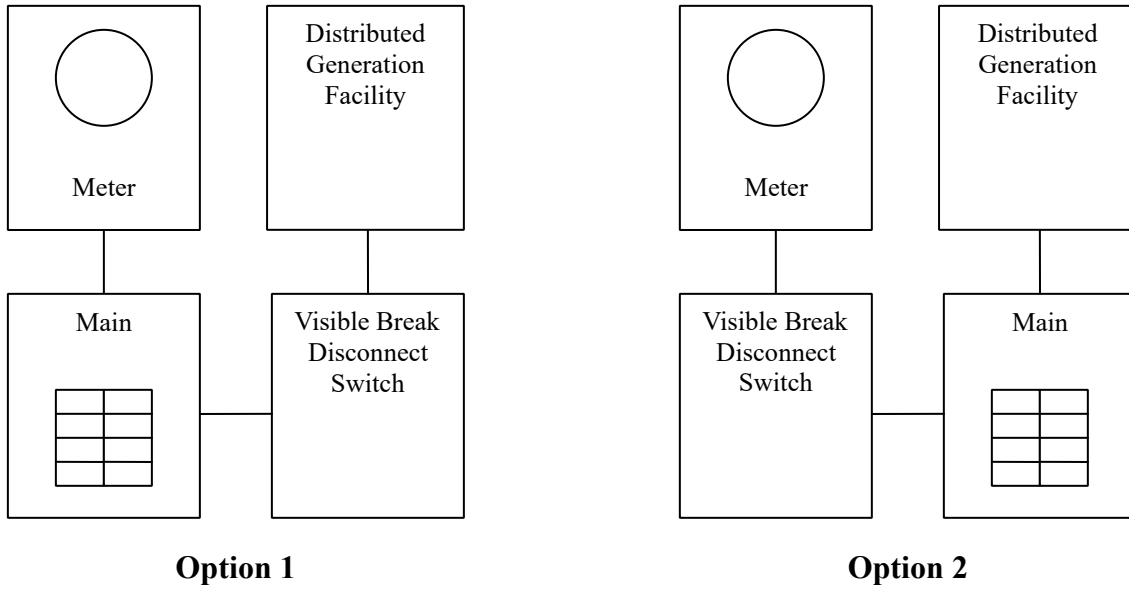


## Example One-Line Diagrams for Distributive Generation Facilities



Notes:

1. Visible break disconnect shall be adequately sized for the installation and of load break type.
2. Visible break disconnect shall be readily accessible, located outside within 5 feet of the meter. It shall have a means to be locked in the open position by JEC personnel.
3. Installation shall meet all applicable NEC and local codes.